



World Health  
Organization

Global Routine Immunization Strategies and Practices (GRISP)

## LEVEL 2 CERTIFICATION COURSE ON REDUCING INEQUITIES AND IMPROVING COVERAGE

LEVEL 2 COHORT 1 – SUMMER 2019 ONLINE 36–48 HOURS  
ENGLISH 13 MAY–5 JULY 2019 FRENCH 30 SEPTEMBER–6 DECEMBER

The World Health Organization (WHO) invites applications for the first cohort of the WHO Scholar **course on Reducing Inequities and Improving Coverage**. This interactive digital course is targeted at WHO EPI staff in country offices, EPI staff working in MoH at national and sub-national levels, and partner agency staff.

**Applications will be accepted until 29 March 2019.**

**Click here to apply to join the WHO Scholar Level 2 certification course on Reducing Inequities and Improving Coverage**



<http://learning.foundation/who-inequities-en>

Prior completion of WHO Scholar GRISP Level 1 certification is preferred but not required for this Level 2 course.

**Successful applicants will receive a Letter of Acceptance by e-mail from WHO.**

Please check your Spam or Junk mail folders to ensure that messages that contain the word “GRISP” is whitelisted, and that scholar@learning.foundation has been added to your address book.

### Schedule overview

Active participation is required for the entire duration of the course.

13–17 May 2019	Onboarding
20–24 May 2019	Orientation
27–31 May 2019	Week 1
3–7 June 2019	Week 2
10–14 June 2019	Week 3
17–21 June 2019	Week 4
24–28 June 2019	Week 5
1–5 July 2019	Week 6

### Webinars open to everyone on key topics in strengthening routine immunization

Alongside the course, these interactive webinars:

- aim to answer “How do I...?” with practical examples and methods shared by a global expert.
- support the progress of course participants, who will be able to engage directly with the presenters.
- will be open to attendance by those who are not taking the course, with no upper limit to the number of attendees.

The schedule of the webinars will be announced soon.

### Weekly discussion group schedule

The English-language discussion group shall meet every Tuesday at 14h00 Geneva Time, starting Onboarding week. **CHECK TIME**



World Health  
Organization

Global Routine Immunization Strategies and Practices (GRISP)

# LEVEL 2 CERTIFICATION COURSE ON REDUCING INEQUITIES AND IMPROVING COVERAGE

ONLINE COURSE LEVEL 2 36-48 HOURS ENGLISH FRENCH

## Context

Many new strategies and related guidance documents to reduce inequities and improve coverage have been developed at WHO based on the GRISP (Global Routine Immunization Strategies and Practices) and RED (Reaching Every District) guidelines. WHO recognizes that countries may need support to plan and implement the strategies and activities included in the guidelines and is therefore offering this course. Prior participation in the WHO Scholar GRISP Level 1 certification course is preferred but not required for participation in this course.

## Aims

The purpose of Level 2 certification course is to focus on specialized topics within the broad GRISP umbrella:

1. Reducing missed opportunities for immunization (MoV).
2. Strengthening immunization in the second year of life (2YL).
3. Integrating immunization across the life course and with other health interventions.
4. Urban immunization and other targeted strategies to reduce inequities.

The main project in this course is the preparation of an action plan to implement relevant, innovative activities in one of four areas of focus.

## Who should apply?

You stand to benefit from this course if...

1. You work in the MoH or partner agency in the national or sub-national EPI programme or you are part of the WHO EPI staff in a country office.
2. You are part of national or sub-national planning processes (cMYP, annual planning, GAVI TCA/HSS planning)
3. You are motivated to implement innovative ideas to reduce inequities and increase immunization coverage in your country context.
4. You have innovative ideas but need support to move from idea to action.

## Learning objectives

Applicants who are selected to participate in the GRISP Level 2 certificate course are expected to be able to:

1. **Identify the guidelines most relevant to their context of work.**
2. **Draw on the WHO guidelines to devise innovative strategies and activities that are relevant to their specific country context and challenges.**
3. **Develop strategic and innovative plans for reducing inequities and increasing immunization coverage.**

Some Scholars may then be invited by WHO for continued technical support to implement these plans.

## Workload

Participants should expect to:

1. Dedicate at least 6-8 hours per week to course work.
2. Participate remotely in the weekly, mandatory, 60-minute group discussion that will take place online once a week.
3. Complete activities that have been divided into short daily tasks intended to be completed in 30 minutes.

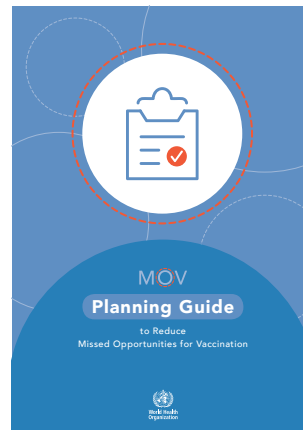
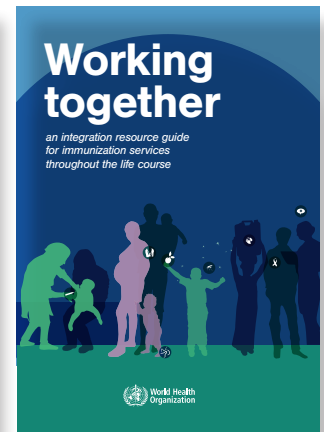
Each set of course activities must be completed within a given week. Participants may schedule their work at any time during the week, except for the weekly group session which is scheduled at a fixed day and time each week. (Those unable to attend for a legitimate reason will be asked to view the recording and complete a catch-up task.)

In addition to these required activities, there may be optional activities for specific topics.

# WHO guidelines

Participants will be invited to select one WHO guideline that is relevant to their context of work in order to develop an action plan to implement activities for:

- Establishing and strengthening immunization in the second year of life: Practices for vaccination beyond infancy, WHO 2018.
- Working together: An integration resource guide for immunization services throughout the life course, WHO 2018.
- Planning Guide to reduce Missed Opportunities for Vaccination, WHO 2017.
- Urban immunization toolkit and guidelines on reducing inequities in immunization.



## Added value

1. The course provides accelerated learning on the use of the latest WHO guidelines to develop a practical action plan to improve immunization coverage in a specific national or sub-national context.
2. WHO staff working at global, regional and country offices and global experts will support the course participants to ensure planned activities are implemented for impact at country level.
3. Participants will work both in small groups (peer review) and as a community to share best practices in immunization planning.
4. In addition to peer review by colleagues, proposals may also receive feedback from subject matter experts at WHO headquarters and regional offices.
5. WHO will issue a Level 2 certificate to those who successfully complete all the requirements of the course.
6. Your digital skills to collaborate and learn remotely will be strengthened, as a member of the WHO Scholar Impact Accelerator.

Some participants may be invited by WHO to further develop their proposals to receive continued technical support toward inclusion of activities in the Targeted Country Assistance (TCA) plans.

## Certification

Upon successful completion of the course and following validation of your final project and assignments by the course team and subject matter experts at WHO headquarters, you will receive a certificate of completion from the World Health Organization.

- Each certificate is valid for a duration of three years.
- Certificate holders agree to show upon request a portfolio of their work that includes the project(s) produced in Scholar.

## Pedagogical approach

WHO has used the Scholar Approach since 2016 to support country-level action planning based on the Global Routine Immunization Strategies and Practices (GRISP) guidelines<sup>1</sup> and effective use of the World Health Organization Vaccination Coverage Cluster Surveys Reference Manual. The approach also draws on evidence-based action and applied learning, leadership acceleration, mentoring, and collaborative methodologies.<sup>2</sup> This Approach,<sup>3</sup> developed by the University of Illinois College of Education and the Geneva Learning Foundation to support effective learning for global health and humanitarian work, combines community of practice, knowledge co-construction, and peer review to support project-based learning.

## What does it mean to become a WHO Scholar?

Participants in WHO Scholar courses are called “Scholars”. Those who have successfully completed at least one WHO Scholar course become Alumni, and are invited to join the WHO Scholar network. Some Alumni may choose to volunteer as WHO Scholar Accompanists, offering their support to new Scholars.

Scholars who successfully complete a course may be invited to the WHO Scholar Alumni Impact Accelerator.

1. Rudi Eggers, Jhilmil Bahl, Devina Ahluwalia, Bill Cope, Reda Sadki, Catherine Russ, Adam Rusch. *The Scholar Approach for immunization capacity-building: Results of a pilot cohort to include GRISP transformative investments in country immunization planning*. Poster session presented at the Teach to Reach Conference (2016).  
 2. Fuente: Brooks, Ann and Watkins, Karen E. (eds.). (1994): *The Emerging Power of Action Inquiry Technologies*. San Francisco, CA: Jossey-Bass, pp. 43-55.  
 3. Cope, Bill, and Mary Kalantzis. “Conceptualizing E-Learning.” Chicago: Common Ground Publishing, 2016.

## What is my chance of being selected by WHO for a course?

WHO will select applicants on the basis of information submitted by each applicant during the application process. Please take the time to provide accurate, complete information as requested in the application. Each course announcement includes specific criteria that will be considered when selecting applicants. Please carefully review these criteria. If you do not meet the stated criteria, your application is unlikely to be selected by WHO. Pay attention to the information contained in the announcement, such as the learning time required per week, as some application questions may refer to this information.

If you have applied but were not selected for previous WHO Scholar courses, this has no effect on a new application.

Candidates recommended by qualified WHO staff, country EPI managers, or WHO Scholar Alumni (who have already completed at least one WHO Scholar course) may be given priority, if their applications meet the required criteria.

## Technical requirements

Applicants are responsible for ensuring that they are able to meet the following requirements.

- ✓ **Information technology:** You will need to access the course web site on a regular basis (preferably every day). Participants need to have access to a reliable Internet connection and a standards-based browser less than two years old (Firefox, Safari, or Chrome). Internet Explorer and Microsoft Edge users will be asked to use a standards-based browser for the course. Mobile-only users will need to use Mobile Chrome in desktop mode when working on their course projects.
  - When working with data, the use of Excel is likely to be required, preferably from a desktop computer.
  - Specific guidance will be provided to those who have bandwidth limitations, intermittent access, or may suffer from disruption of their connection to the Internet.
- ✓ **Languages:** The language of the course are either English or French. Participants are encouraged to schedule extra time if they are not fully proficient writing in the course language.

# WHO Scholar Accompanists to support and guide your progress

Throughout each course, participants may receive support from WHO Scholar Accompanists (Accompagnateurs). They are working immunization professionals who have volunteered to support their peers. They know what it is like to juggle a full-time job while participating in rigorous course work. Because they have both the job and learning experience, Accompanists are key actors in the support system to help you succeed in WHO Scholar courses.

Accompanists may or may not have specific expertise in immunization monitoring. Subject matter expertise will be provided by the course team. Rather, Accompanists will help you complete onboarding and orientation in Scholar. They will guide you through the learning process, help you to use the platforms, make sense of the assignments, and ensure that you know what you need to do next.

- Course participants may request the support of an Accompanist
- Some participants will be assigned an Accompanist if there are indications that they may need support.

Both Accompanists and Scholars will receive guidance to ensure that this exchange will be focused and productive.

Alongside the course team and the Accompanists, Scholars will also be invited to connect with each other, to learn from and support each other, but also to rekindle passion for and commitment to our work.

Connecting together as a learning community, we will support each other to strengthen our countries' work to improve immunization.

## Honor code

The WHO Scholar community is devoted to learning and the creation of knowledge. We view integrity as the basis for meaningful collaboration. We thus hold honesty – in the representation of our work and in our interactions – as the foundation of our community.

Members of the WHO Scholar community commit themselves to producing course work of integrity – that is, work that adheres to the scholarly and intellectual standards of accurate attribution of sources, appropriate collection and use of data, and transparent acknowledgement of the contribution of others to their ideas, discoveries, interpretations, and conclusions. Cheating on assignments or projects, plagiarizing or misrepresenting the ideas or language of someone else as one's own, falsifying data, or any other instance of dishonesty violates the standards of our community, as well as the standards of the wider world of immunization.

WHO Scholar course participants are required to adhere to a strict Honor Code. Violation of the Honor Code may result in removal from the course, loss of certification (including prior WHO Scholar certificates), and notification of your employer.

## Research and evaluation

WHO will review projects developed by Scholars, and may consider some of them for use in the Organization's communication, advocacy and training efforts. If this is the case, WHO will contact you to request your agreement and, if needed, to address any sensitive issues related to its content. Learners may also be invited to participate in education research by the Geneva Learning Foundation and its research partners to evaluate the efficacy of this learning initiative. Participation in this research is completely voluntary, and you may stop taking part at any time. In cases where learners do not consent, no learner data will be collected. Participation or non-participation will have no effect on assessment of your performance in the course or your present or future relationship with WHO.

The WHO Scholar programme leverages the Scholar Approach developed by the Geneva Learning Foundation. The Foundation is developing this programme for the World Health Organization, with the support of the Bill and Melinda Gates Foundation.